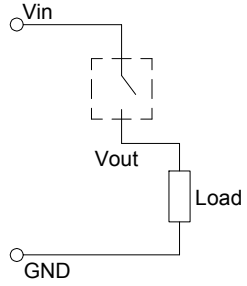


**WIRING INSTRUCTIONS**

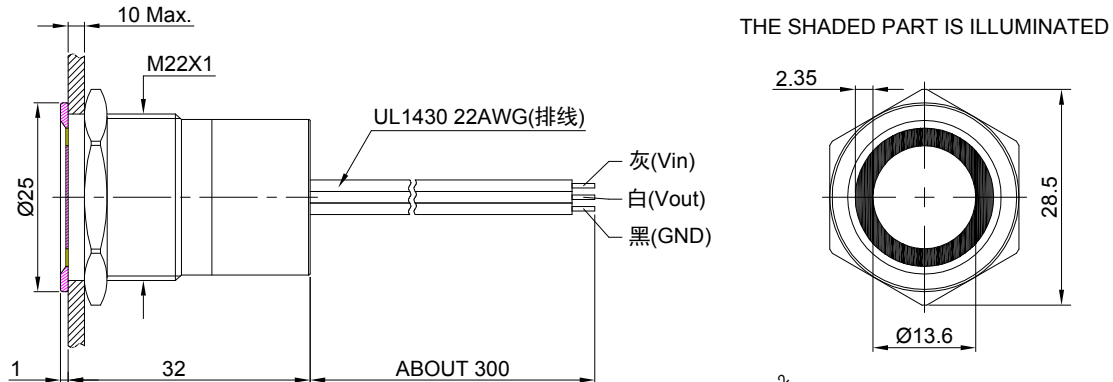


HIGH LEVEL OUTPUT IS USED TO CONTROL THE POSITIVE ELECTRODE (POSITIVE VOLTAGE); PNP

|                       |           |  |  |
|-----------------------|-----------|--|--|
| NO. <b>DZ202312AM</b> |           | CUSTOMIZED PRODUCT MODEL: DZ-TS22E □YSS▲ |  |
| CUSTOMIZED            |           |  |  |
| ①                     | 定制外壳。     |  |  |
| ②                     | 定制连接壳。    |  |  |
| ★                     | 外壳+连接套使用。 |  |  |

| "□" | ELECTRICAL FUNCTION | "△" | 1 LED            | "△" | 2 LED      |
|-----|---------------------|-----|------------------|-----|------------|
| 10  | NO MOMENTARY (PNP)  | NR  | NON-ILLUM./RED   | RG  | RED/GREEN  |
| 01  | NC MOMENTARY (PNP)  | NG  | NON-ILLUM./GREEN | RB  | RED/BLUE   |
| 10Z | NO LATCHING (PNP)   | NB  | NON-ILLUM./BLUE  | BG  | BLUE/GREEN |
| 01Z | NC LATCHING (PNP)   | NW  | NON-ILLUM./WHITE | GR  | GREEN/RED  |
| "▲" | LED VOLVATE         | RN  | RED/NON-ILLUM.   | BR  | BLUE/RED   |
| 5V  | DC 5V               | GN  | GREEN/NON-ILLUM. | GB  | GREEN/BLUE |
| 12V | DC 12V              | BN  | BLUE/NON-ILLUM.  |     |            |
| 24V | DC 24V              | WN  | WHITE/NON-ILLUM. |     |            |

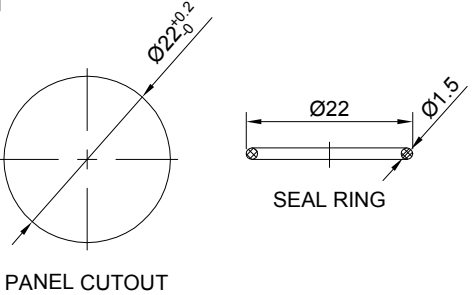
|             |                    |               |
|-------------|--------------------|---------------|
| FOR<br>客户名称 | APPROVED<br>客户确认签字 | ATTN<br>销售负责人 |
| 样品图         |                    |               |



|     | WITHOUT LIGHTS | 1 LED | 2 LED | NOTE |
|-----|----------------|-------|-------|------|
| 10  |                |       |       |      |
| 01  |                |       |       |      |
| 10Z |                |       |       |      |
| 01Z |                |       |       |      |

**SPECIFICATIONS:**

- 1.Max.SWITCH RATING: 500mA/24VDC.
- 2.ELECTRICAL LIFE: 50 MILLION CYCLES AT FULL LOAD.
- 3.INSULATION RESISTANCE: ≥10MΩ 600VDC.
- 4.OPERATING TEMPERATURE: -25℃~ +55℃(NO FREEZING, KEEP THE AIR FLOWING AROUND PUSHBUTTON ).
- 5.TORQUE: 0.6Nm Max. APPLIED TO NUT.
- 6.OPERATING FORCE: ON.
- 7.FRONT PANEL PROTECTION DEGREE: IP67.
- 8.TERMINAL TYPE: UL1430 22AWG LENGHT≈300mm.
- 9.GENERAL TOLERANCE:0-18mm=±0.25, 18-80mm=±0.52.
- 10.RoHS CAN BE CUSTOMIZED.



- MATERIALS:**
- 1.BUTTON: STAINLESS STEEL.
  - 2.BODY: STAINLESS STEEL.
  - 3.DIFFUSER: PC.

|                   |                           |  |   |         |
|-------------------|---------------------------|--|---|---------|
| 工序                | 日期                        | 数量                                     | 检验方式  | 签字      |
| 操作者/工段长           |                           |  | <input type="checkbox"/> 抽检 <input type="checkbox"/> 全检 |         |
| 终检                |                           |  | <input type="checkbox"/> 抽检 <input type="checkbox"/> 全检 |         |
| BRAND 品牌          |                           | <b>红波按钮制造有限公司</b>                      |   |         |
| <b>ONPOW 欧宝龙®</b> |                           | ONPOW PUSH BUTTON MANUFACTURE CO.,LTD. |   |         |
| TITLE 名称          | TS SERIES TOUCH SWITCH    |  | UNIT 单位   | mm      |
| DWG NO. 图号        | DZ202312AM(TS22E PNP).DWG | SCALE 比例                               | 1 : 1   | SIZE 图纸 |
| FILE NAME 档案名称    | DZ202312AM                | DRAWN 制图                               | HCP 2023/12/02  | SHEET 张 |
|                   |                           |  | 1/1   | REV. 更改 |
|                   |                           |  |   | 1       |